



**Small City**  
**BIG**  
**Opportunity**

*How can a small Canadian city support a network of high-tech businesses?*

For starters, it doesn't think like it's small.

Summerside is home to a thriving business community because of its ideal location, skilled labour force, state-of-the art infrastructure and competitive business support strategies.

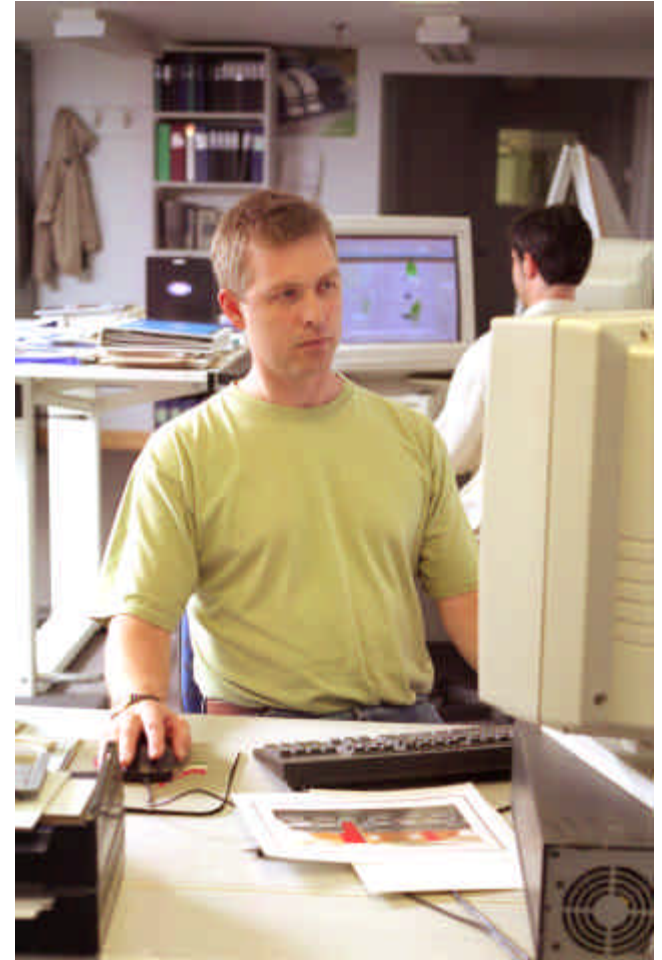
City of  
*Summerside*

Prince Edward Island

## BUILDING AND GROWTH OPPORTUNITIES

A diverse Summerside economy has created a highly stable operating environment for existing businesses and residents. With close to 600 acres of land, primarily in the west and north-west sectors close to highway access and our airport, Summerside has plenty of room for growth.

Summerside's low land and servicing costs make it an attractive location of choice. We also boast a secure, economical and plentiful supply of electricity and water, further supporting our city infrastructure.



City of  
*Summerside*

Prince Edward Island

## **IN CONCERT WITH OUR ADVANCED INFRASTRUCTURE, SUMMERSIDE IS HOME TO A CORE OF IT AND IT-RELATED COMPANIES**

Whether engaged directly in IT or using IT to advance business processing in our aerospace clusters, value added food manufacturing, health care, fibre optic cabling or web based solutions,

Summerside has and is using the latest in information technologies solutions.

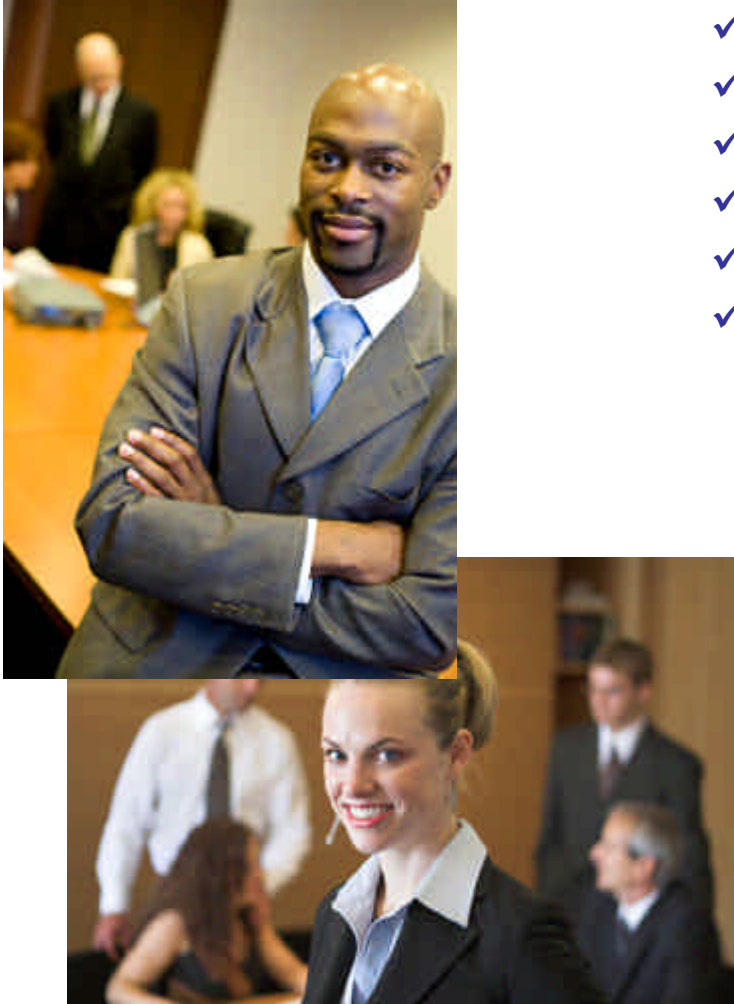


***Technology Companies Thrive in Summerside***

City of  
*Summerside*

Prince Edward Island

## WHY SUMMERSIDE?



- ✓ Our Low Cost Operating Environment
- ✓ Availability of Potential Sites
- ✓ Growing Community
- ✓ A Technology Advanced Community
- ✓ Productive Place
- ✓ The Right People

**Because We Understand the  
Importance of Labour As Top Priority  
and  
Summerside is an Untapped Resource!**

City of  
*Summerside*

Prince Edward Island

## ***Redefining Office Space in Summerside Prince Edward Island***

*“Holman’s on The Water”*  
90,000 Square Feet

### ***Mixed Use Retail and Office Development***

This ambitious development represents our commitment to innovation and the support of technology-based industries. This downtown redevelopment project is an advanced building under construction to accommodate the latest technology requirements of business. In the heart of our downtown, this building overlooks our beautiful waterfront. It offers competitive rates and flexible leasing terms for high-tech companies.



# HOLMAN'S ON THE WATER



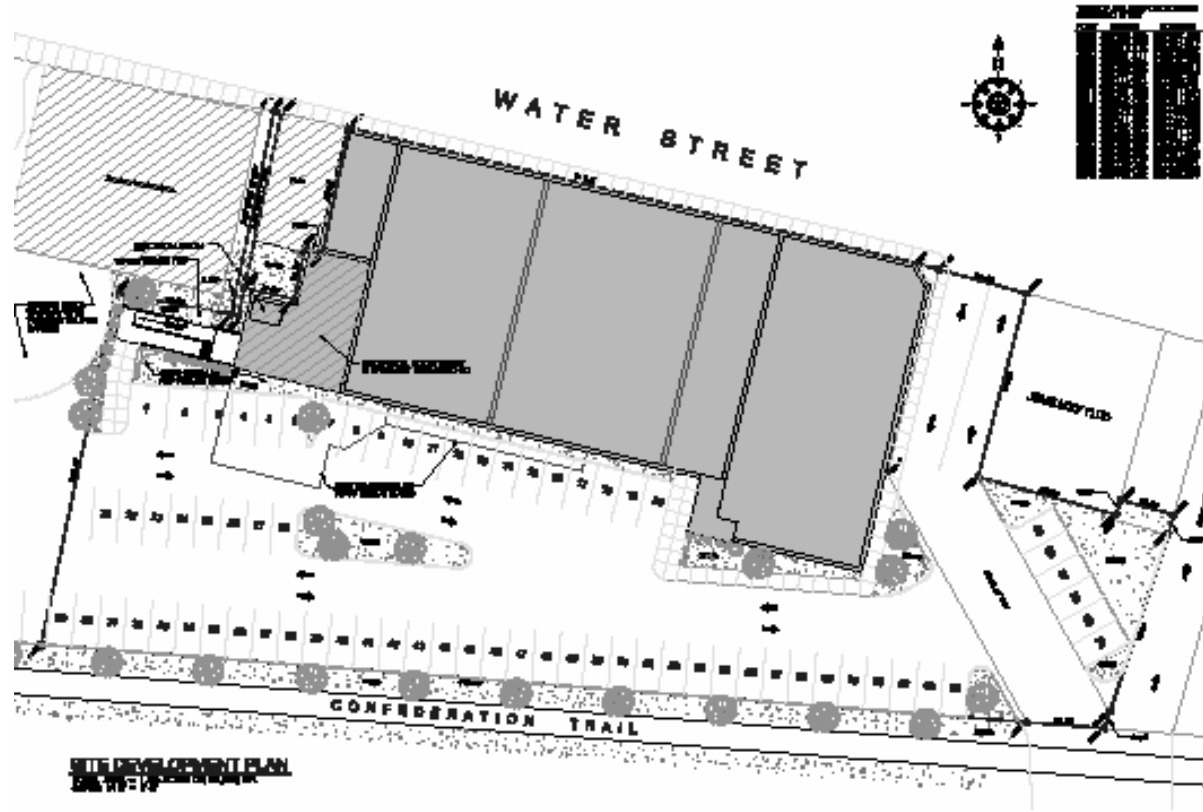
# HOLMAN'S ON THE WATER ... TYPICAL FINISHED INTERIOR



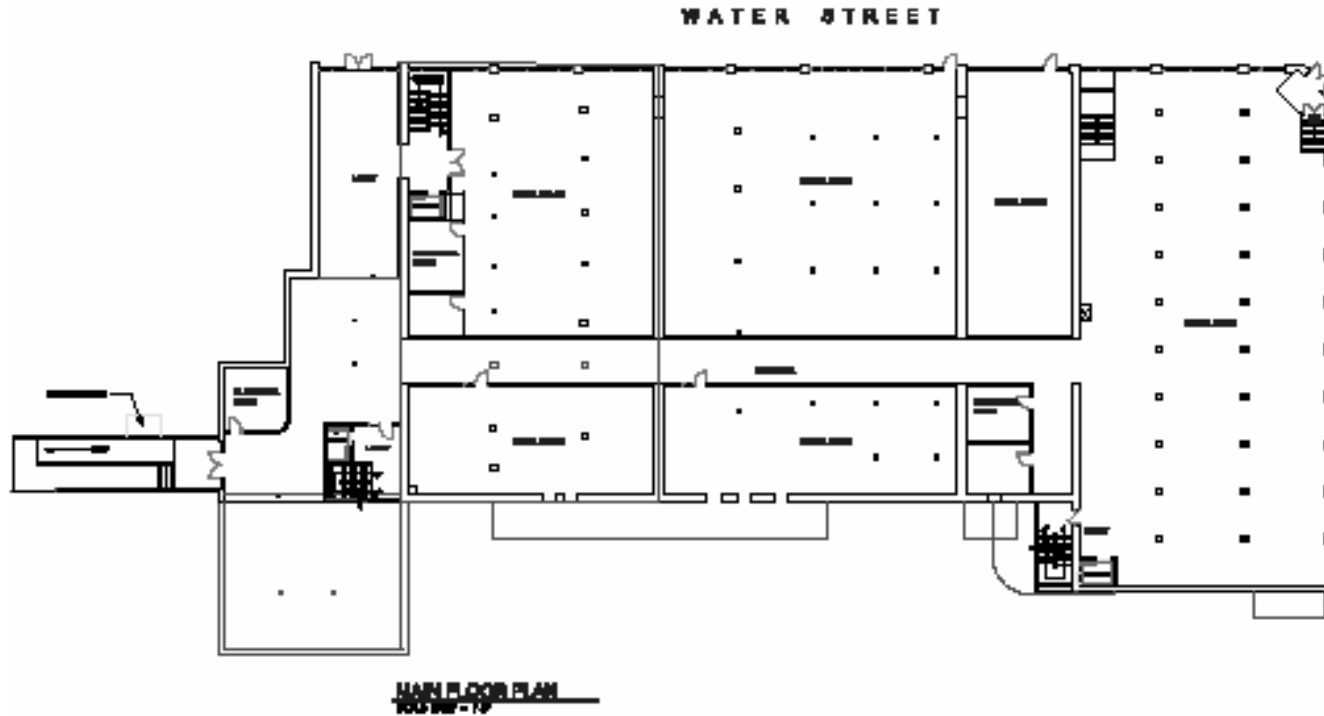
City of  
*Summerside*

Prince Edward Island

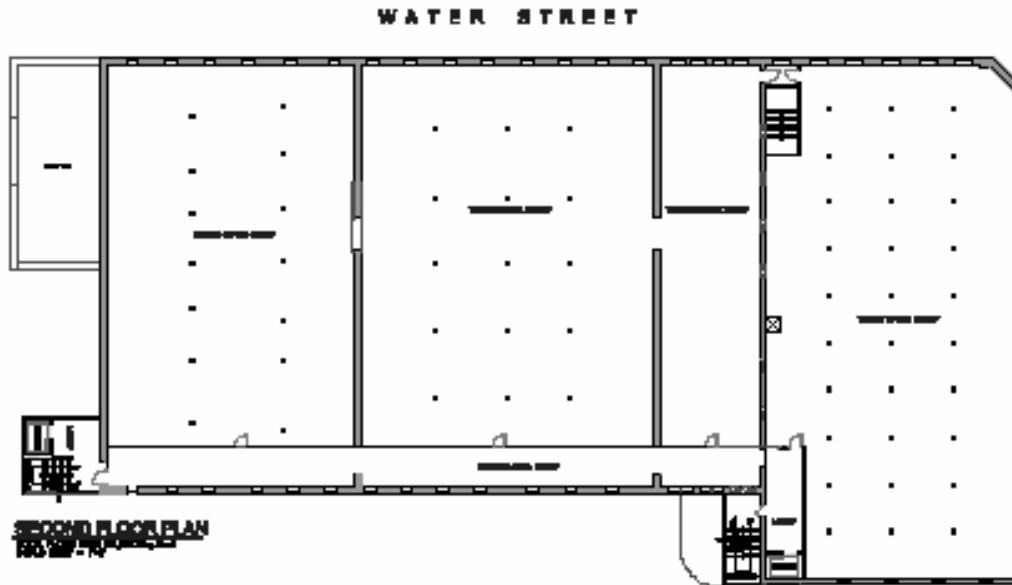
# HOLMAN'S ON THE WATER ... SITE OVERVIEW



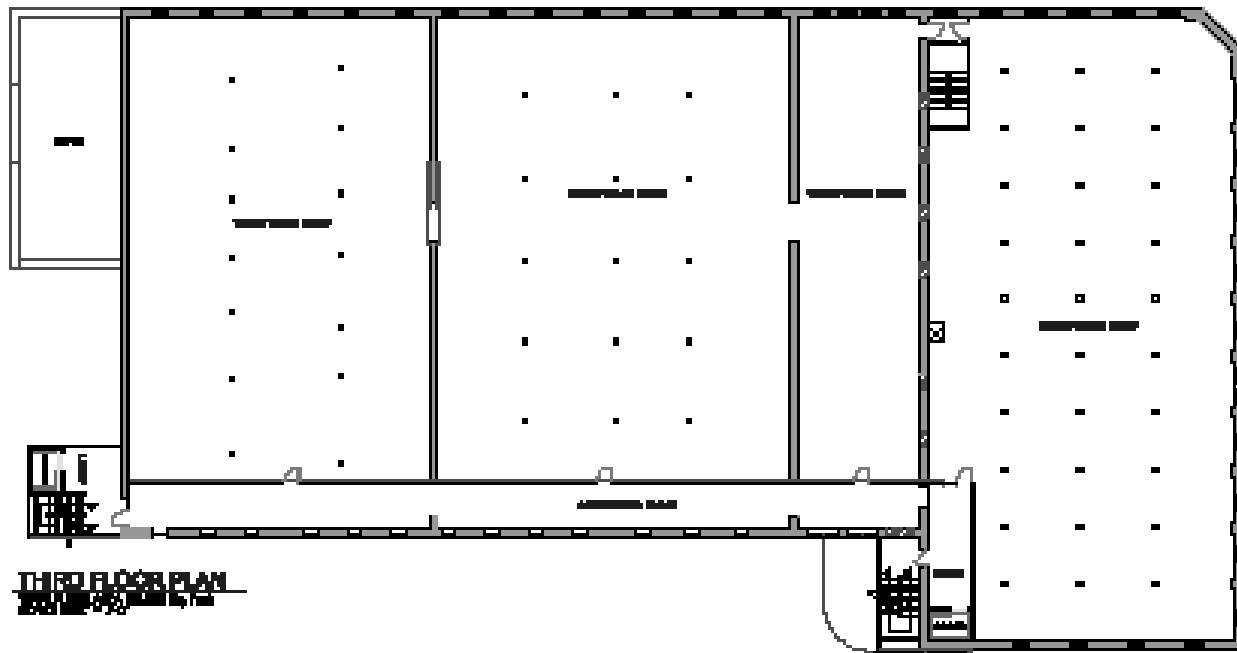
# HOLMAN'S ON THE WATER ... FIRST FLOOR PLAN



# HOLMAN'S ON THE WATER ... SECOND FLOOR PLAN



# HOLMAN'S ON THE WATER ... THIRD FLOOR PLAN



## INFORMATION TECHNOLOGY AND NEW MEDIA

Because of our size, we are ideally suited to partner with companies in the early stages of the IT innovation cycle, including applied research and new product development.

PEI is dedicated to the ICT industry and our very specific objectives are  
The objectives are to:

- ✓ Increase the level of employment in the province
- ✓ Achieve aggregate investment in capital and infrastructure
- ✓ Achieve world-wide awareness of Prince Edward Island as a production centre for film, television and new media

The Strategies are to:

- ✓ Market Prince Edward Island as an attractive business expansion location
- ✓ Identify new infrastructure initiatives that enhance the Province's competitiveness
- ✓ Attract out-of-province production offering an economic opportunity to enhance industry skills among Islanders
- ✓ A Partnership Approach
- ✓ In Summerside and throughout Prince Edward Island, you'll experience easy access to key decision makers. On behalf of its partners in economic development, Technology PEI often coordinates the assessment of new IT, Film and New Media development projects for Province of Prince Edward Island, serving as a central resource for companies seeking information on access to complimentary federal and provincial assistance programs.



## HOLMAN'S ON THE WATER ... LEASING CONTACT

Summerside Regional Development Corporation

Arnold Croken  
98 Water Street  
Summerside, Prince Edward Island  
C1N 4N6

Phone: (902) 436-2246

Fax: (902) 436-9269

Email: [acroken@srdcpei.com](mailto:acroken@srdcpei.com)

